

# **NURSING PROFESSIONAL DEVELOPMENT AND CLINICAL OUTCOMES**

Dayna Vidal, Vice President Nursing Professional  
Development and Clinical Outcomes

# Grady's History

- Grady Health System was the vision of Henry W. Grady, editor of the "*Atlanta Constitution*," who worried about the lack of quality health care for Atlanta's poor.
- On June 1, 1892 Grady Hospital officially opened. At that time, Grady Hospital had 110 beds and one operating room with an amphitheater for students and staff.
- Grady Health System has grown considerably and now stands as one of the largest public health systems in the United States.
- Grady continues to maintain its commitment to the healthcare needs of the underserved while offering a full range of specialized medical services for all segments of the community.



# Grady: An Invaluable Asset



**Industry-leading  
Marcus Stroke and  
Neuroscience Center**



**Georgia Cancer  
Center for  
Excellence and  
Avon Breast Center**



**911 ambulance service for  
Atlanta and South Fulton;  
service provider for 16 rural  
GA counties**



**State-of-the-art  
Correll Cardiac  
Center**



**Busiest Level 1  
Trauma Center in  
Georgia – ACS  
Nationally Certified**



**One of the country's  
largest infectious  
disease programs**



**Nationally  
accredited  
burn center –  
1 of only 2 in  
GA**

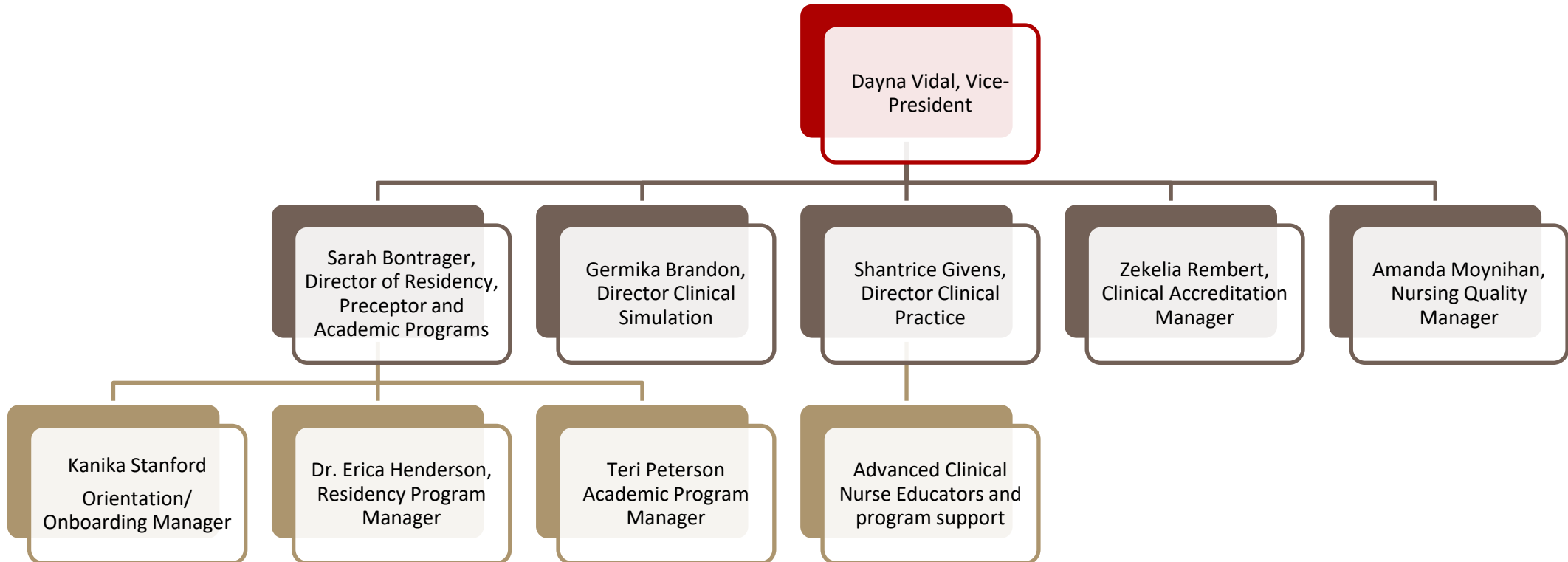


**World's first 24-hr  
comprehensive  
sickle-cell center**

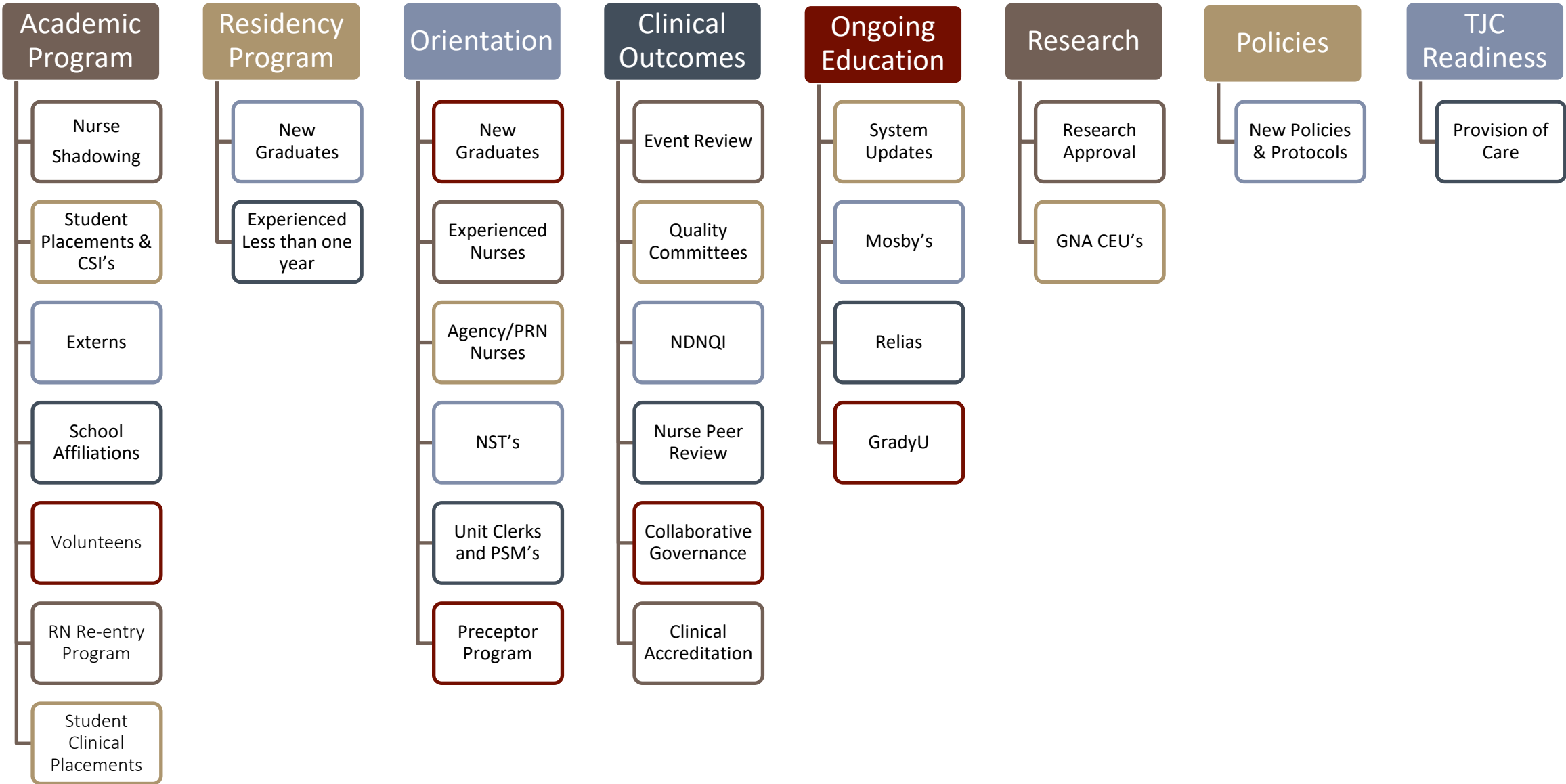


**Georgia's only  
poison control  
center**

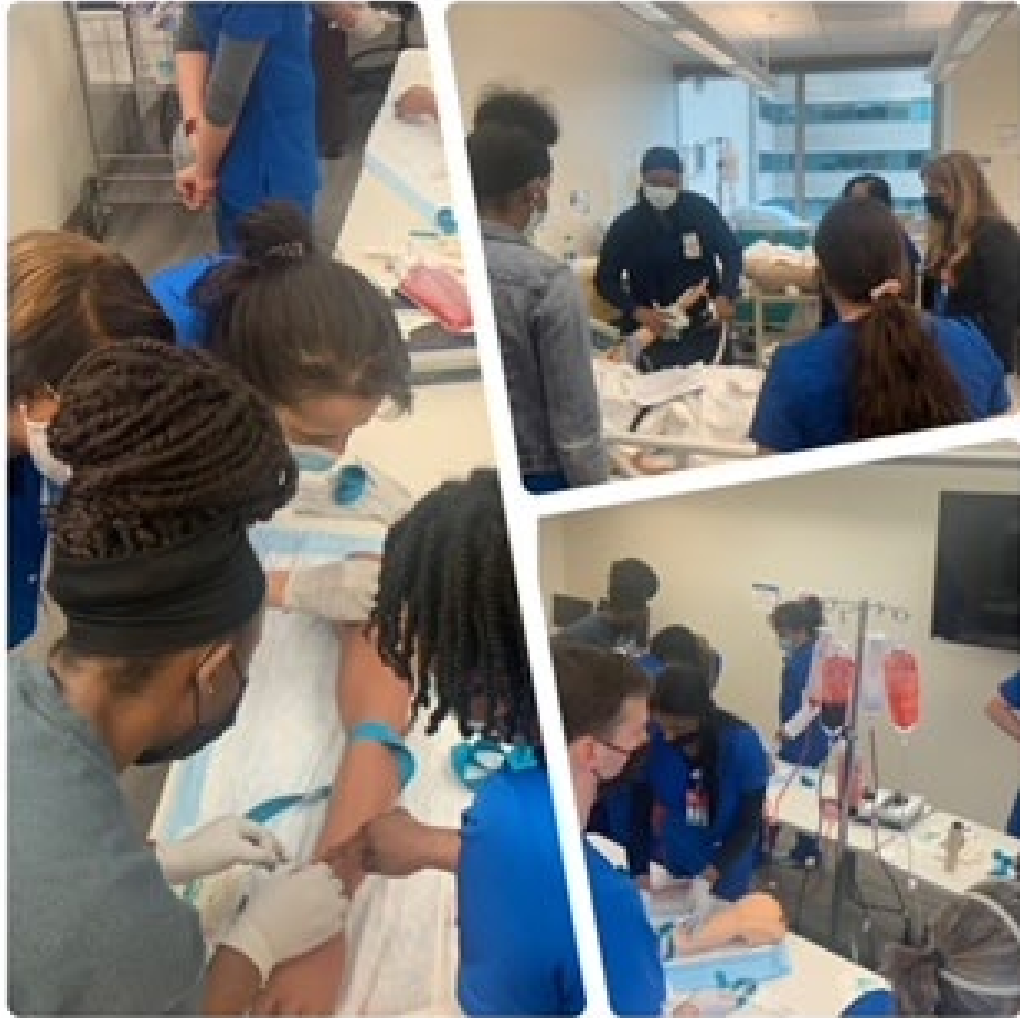
# Nursing Professional Development Leadership Team



# NPD Department Functions



# Nurse Residency Program Overview



- 12-month program
- Shifts on unit start immediately after 2-week initial orientation
- Monthly Vizient sessions
- Quality improvement project and poster competition in front of leadership



# Nurse Extern Program Overview



- Rising seniors or soon-to-graduate nursing students to build clinical competencies.
- May remain in the Nurse Extern status for 18 months, which may be extended if needed after graduation and successful NCLEX passing

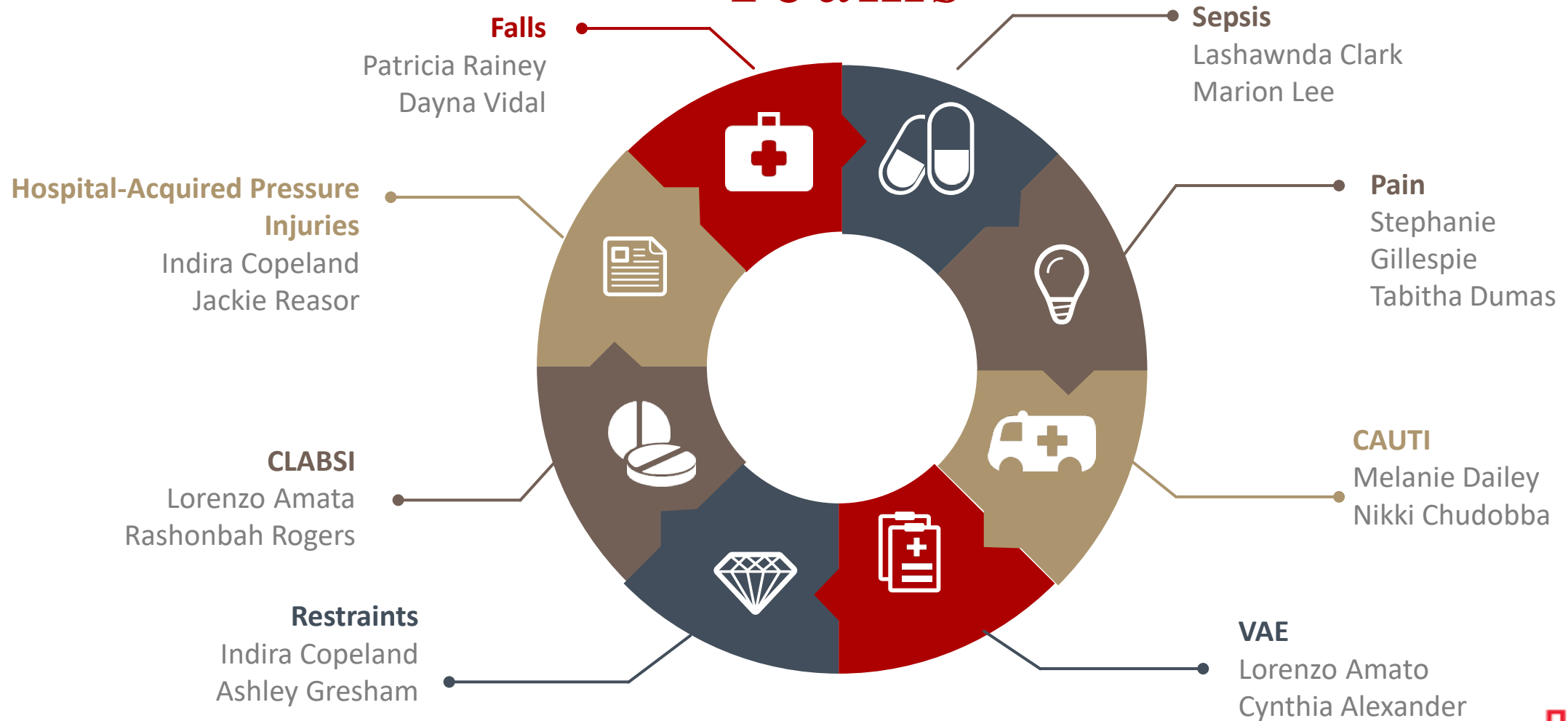
# Woodruff Foundation and Georgia State Partnership

- Grant for \$12.5 million to create a pipeline for nurses by supporting their professional growth and development
- Primary Clinical Site for Georgia State Nursing Students
- Clinical Site Instructors
  - Dual role with Grady FT staff working one shift as Clinical Faculty for a group of GSU students





# Nursing Performance Improvement Teams



# CLINICAL SIMULATION



- Grant for \$12.5 million to fund the creation of a new state of the art Simulation Learning Center
- Dr. Germika Brandon, Director

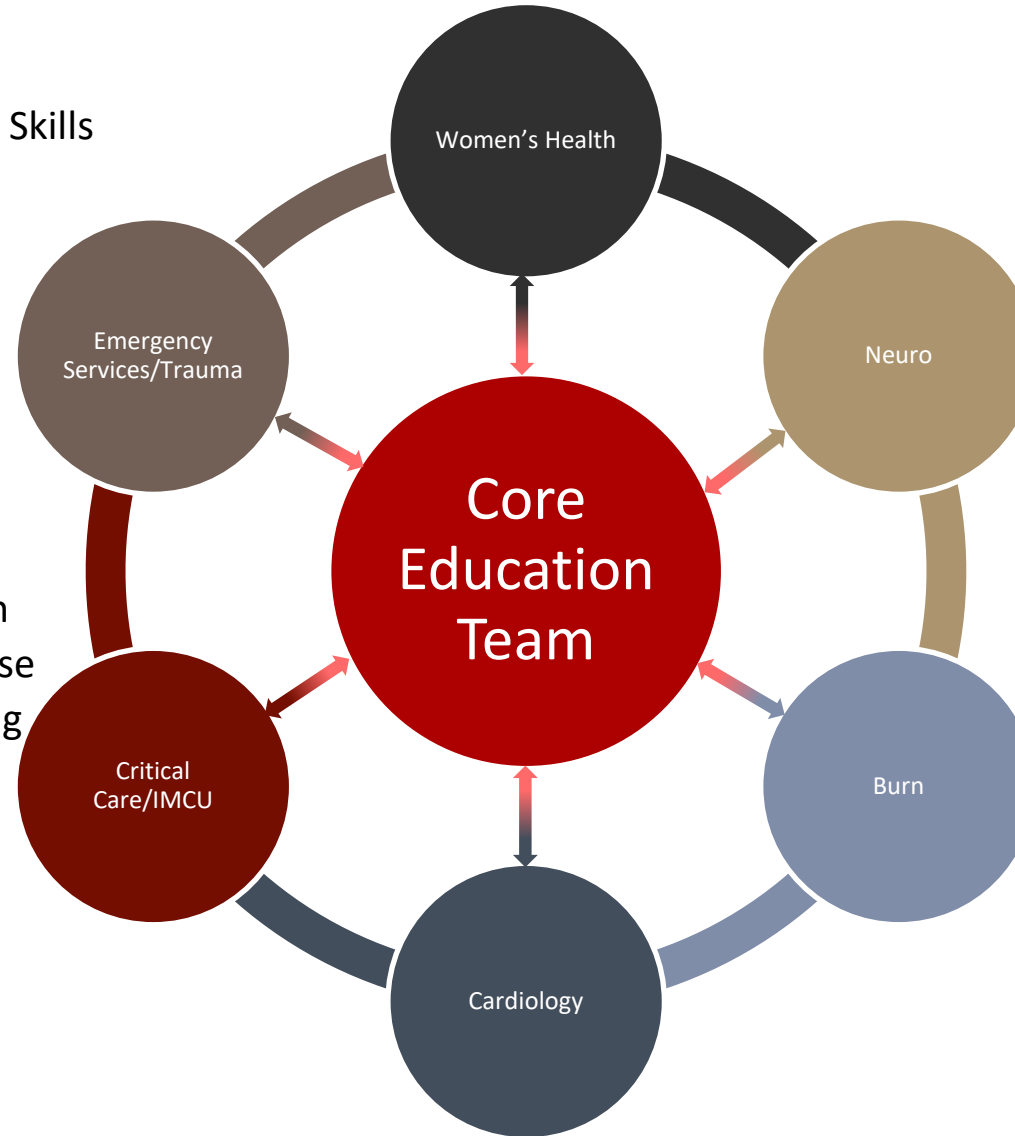
# CLINICAL PRACTICE PROGRAM

## ORIENTATION/ONBOARDING

Experienced nursing orientation and Skills  
Bootcamp  
New grad education and skills  
IV University

## CRITICAL CARE EDUCATION

Mock Code Simulation once a month  
EKG - Monitor Tech/EKG – Live Course  
Coordination of CC education training  
for CC specialties  
Critical Drip ICU  
CC Orientation Curriculum  
Management of the Patient on  
Telemetry Course



## UNLICENSED ASSISTIVE PERSONNEL

Preceptor Course NST  
Unit Clerk Orientation  
PSM Orientation

## PROFESSIONAL PRACTICE PROGRAMS

Certification Bonus Coordination  
Collaborative Governance

## ACUTE CARE EDUCATION

Acute Care Orientation Curriculum  
Coordination of CC education  
training for Acute care specialties  
Peritoneal Dialysis education

# The Future of Nursing



## Innovation

How do we infuse innovation like robotics and AI into nursing while maintaining the art and science of caring



## Reach For the Stars

Collaborative partnerships that balance the needs of the new generation of nurses



## Rewards and Recognition

Redefined



## Advanced Degrees

Less emphasis on keeping the bodies in the building and more on branding their hearts and minds

**QUESTIONS**

 **Grady**