

## Banner 9

### ZSPSYLB – Load Book Requirements into forms SCASYLB and SSASYLB

ZSPSYLB (Job Submission) reads a comma delimited file (loaded from /u01/app/banner/dataload/general directory) and loads syllabus information into forms SCASYLB and SSASYLB, under the Required Materials tab. For each subject/course or CRN, the book description, ISBN and price will be loaded.

Refer to the excel spreadsheet (see CSELIST.xls) for the sample format. This sample format must be used for the upload of the book requirements. An export of subject and courses info can be extracted from the bookstore, or any software can be used to obtain the excel spreadsheet for the given term (CSELIST.xls). Next save the book requirements file to a type CSV and a file name extension of CSV. Finally, use Notepad to save the data to a TXT file. These steps will create the comma delimited file (see below).

In the UPDATE mode, this process first deletes all Book Requirements for the given term and then loads the data from the comma delimited file. Note: All CRNs for each subject/course will have the same book requirements loaded into “Required Materials”. This data will be found on the secure side Class Schedule but it isn’t on the Student Detail Schedule. You can see the “Syllabus Available” on the secure side but it is “secure”. It is difficult to find. A student registering via SSB could go to registration, add/drop course, click class search, select subject and/or number, click class search again, click CRN, then you can see “syllabus available” just as you do in the unsecured area, but, again, it does not show on the Student Detail Schedule, per Ellucian.

On the landing page enter ZSPSYLB, then press enter.



In Process Submission select **Go**



*In the Printer Control Section – Enter Database*

**Alt Page Down** to go to next section or click on the down arrow at the bottom of the page.



**Enter your Parameter Values.** Each Parameter is defined in red.

Number *	Parameters
01	Term Code <b>Enter the term code</b>
02	File Name <b>Enter the thirty-character file name of the text file. For example: book.txt. Keep the booklist text file short and simple. This file must be loaded in /u01/app/banner/dataload/general directory.</b>
03	Update (Y/N) <b>Enter Y to upload the book requirements information into Banner or enter N to have a report only.</b>
04	Enter Lines per Page <b>This parameter defaults to 55 but can be changed.</b>

#### **Note:**

#### **ZSPSYLB Processing**

There will be a log and lis file. They are located in /u02/jobsub/PROD/gurjobs directory on your Banner box.

ZSPSYLB produces a report showing the Subject/Course or CRN, Description, ISBN and the dollar amount. The subject/course information will print first. Subsequent CRNS will print afterwards.

## In-Put File

An excel spreadsheet converted into a comma-delimited file is the input file for ZSPSYLB. The file must contain the header record and it must look like the example below. The header record must be the first record in the file (Subj,Crse,Desc,ISBN,Price).

```
Subj,Crse,Desc,ISBN,Price
ACCT,1102,COLLEGE ACCT 5TH ED CH1-1,1234567890,$85.70
ACCT,1102,STUDY GDE 1-12,1111111111,$45.70
ACCT,1102,COLLEGE ACCT 5TH,2222222222,$121.41
WLD,152,STUDY GDE 13-28,3333333333,$45.70
WLD,153,MICRO EXCEL 2007,444444444,$72.79
AHS,1011,PAYROLL ACCT 2010,5555555,$167.50
ACCT,1152,AUDITING,6666666,$167.50
```

ZSPSYLB first deletes all syllabus information for the given term/semester. Next, it reads and edits the comma-delimited file and verifies Subject, course, and CRN information within Banner. It pulls all CRNs for each Subject/Course. The report can be run both in AUDIT and UPDATE modes. When run in update, Syllabus information is updated into forms SCACRSE and SSASYLB and record counts are provided.

NOTE: All CRNS for each given subject/course will load the syllabus information to the section, Requirement Materials. If you have certain CRNS with different book requirements, you may have to edit the Required Materials in SSASYLB and make any corrections.

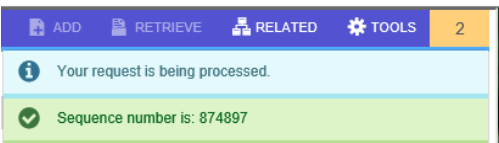
After you have entered your parameters **Alt Page Down** to go to next section or click on the down arrow at the bottom of the page.



Press **F10** to save or select the **SAVE** button at the bottom right corner to run the process.



Once the process is run you will see informational message in the top right corner of your page. It will also identify the sequence number.

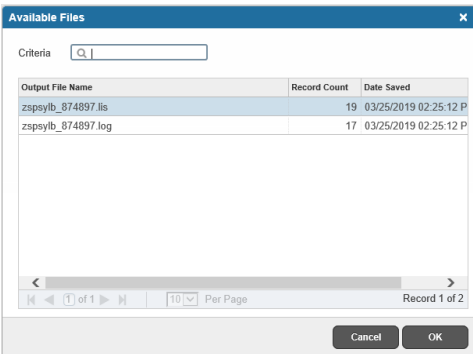
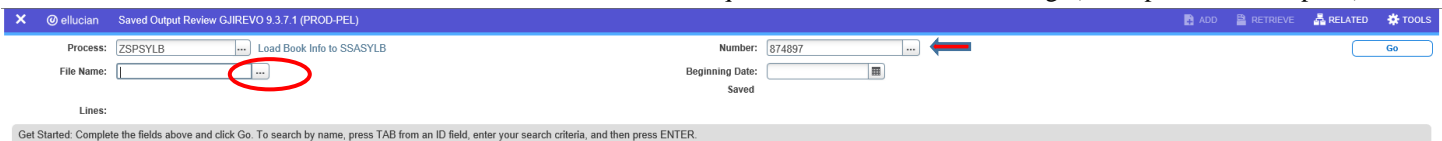


To view your .log and .lis file, click the RELATED tab at the top right of the page and then select Review Output [GJIREVO]



Click on the ... to view your .log or .lis file.

Your sequence number will be showing. (If the process is complete)



You will see your available files.

Select either your .log file or .lis file

Then click OK

Below is sample output information of your .log, and .lis file.

### This example shows ZSPSYLB.log file

The screenshot shows a web interface for reviewing output. At the top, there's a header with a close button (X), a user icon (ellucian), and the text 'Saved Output Review GJIREVO 9.3.7.1 (PROD-PEL)'. Below this, a status bar displays: 'Process: ZSPSYLB Load Book Info to SSASYLB Number: 874897 File Name: zpspylb\_874897.log Beginning Date Saved: Lines: 17'. The main content area is titled 'SAVED OUTPUT REVIEW' and contains the following text:  
PARAMETER (1) = [TMOORE]  
PARAMETER (2) = XXXXXXXX  
PARAMETER (3) = 874897  
PARAMETER (4) = ZSPSYLB  
Successfully Connected to Oracle in ZSPSYLB  
PROBLEM WITH GJBPRUN  
Version 2.0  
25-MAR-2019  
  
Term Code 201716  
Directory /u01/app/banner/dataload/general/  
File Name book.txt  
Update (Y/N) Y  
Lines Per Page 00000055  
  
Records added to form SCASYLB +00000  
At the bottom, there are navigation controls: '1 of 1' and '20 Per Page'.


To go back and look at the .log file, click the Start Over button on the top right hand corner of the page.

[Start Over](#)

You can select your lis file to review.

### This example shows ZSPSYLB.lis file

The screenshot shows a web interface for reviewing output. At the top, there's a header with a close button (X), a user icon (ellucian), and the text 'Saved Output Review GJIREVO 9.3.7.1 (PROD-PEL)'. Below this, a status bar displays: 'Process: ZSPSYLB Load Book Info to SSASYLB Number: 874897 File Name: zpspylb\_874897.lis Beginning Date Saved: Lines: 19'. The main content area is titled 'SAVED OUTPUT REVIEW' and contains the following text:  
201716 25-MAR-2019 02:25:11 TCSG Pelican Group - PROD PAGE: 1  
Load Syllabus Information into Banner Message  
SUBJ-CRSE DESCRIPTION ISBN PRICE  
ACCT1102 COLLEGE ACCT 5TH ED CH1-1 1234567890 \$85.70 INVALID SUBJ/CSRE  
ACCT1102 STUDY GDE 1-12 1111111111 \$45.70 INVALID SUBJ/CSRE  
ACCT1102 COLLEGE ACCT 5TH 2222222222 \$121.41 INVALID SUBJ/CSRE  
CHECK SCACRSE-ERROR  
WLD 152 STUDY GDE 13-28 3333333333 \$45.70 INVALID SUBJ/CSRE  
CHECK SCACRSE-ERROR  
WLD 153 MICRO EXCEL 2007 44444444 \$72.79 INVALID SUBJ/CSRE  
CHECK SCACRSE-ERROR  
AHS 1011 PAYROLL ACCT 2010 5555555 \$167.50 INVALID SUBJ/CSRE  
CHECK SCACRSE-ERROR  
ACCT1152 AUDITING 666666 \$167.50 INVALID SUBJ/CSRE  
CHECK SCACRSE-ERROR  
INVALID SUBJ/CSRE  
CHECK SCACRSE-ERROR  
  
RECORDS ADDED: Subj/Courses 0 Crns 0  
At the bottom, there are navigation controls: '1 of 1' and '20 Per Page'.

If you click the X at the top left,  you will go back to Process Submission Control GJAPCTL – Process ZSPSYLB.

#### **NOTE:**

#### **ZSPSYLB.lis - Informational/Error Messages:**

##### **CHECK SCACRSE-ERROR**

ZSPSYLB can't read form SCACRSE with the subject and course information for the given term. Verify the subject and course information is valid for the given term. No further action is taken.

##### **CHECK SSASYLB-ERROR**

ZSPSYLB can't generate the section information to form SSASYLB. Verify the CRN information. No further action is taken.

ADDED TO SCASYLB

ZSPSYLB has added course information to form SCASYLB. This process has been run in UPDATE mode.

TO BE ADDED TO SCASYLB

ZSPSYLB has added course information to form SCASYLB. This process has been run in AUDIT mode.

INVALID SUBJECT/COURSE

ZSPSYLB has found an invalid subject/course in the input file for the given term. No further action is taken.

INVALID CRN

ZSPSYLB has found an invalid CRN for the subject/course for the given term. No further action is taken.

**ZSPSYLB Report Messages**

RECORDS ADDED

ZSPSYLB has added the following syllabus record to Banner. This process has been run in UPDATE mode.

RECORDS TO BE ADDED

ZSPSYLB is prepared to add the following syllabus records to Banner. This process has been run in AUDIT mode.